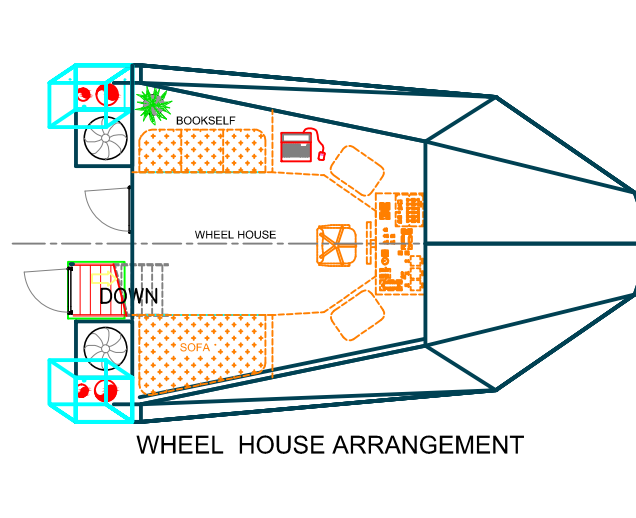
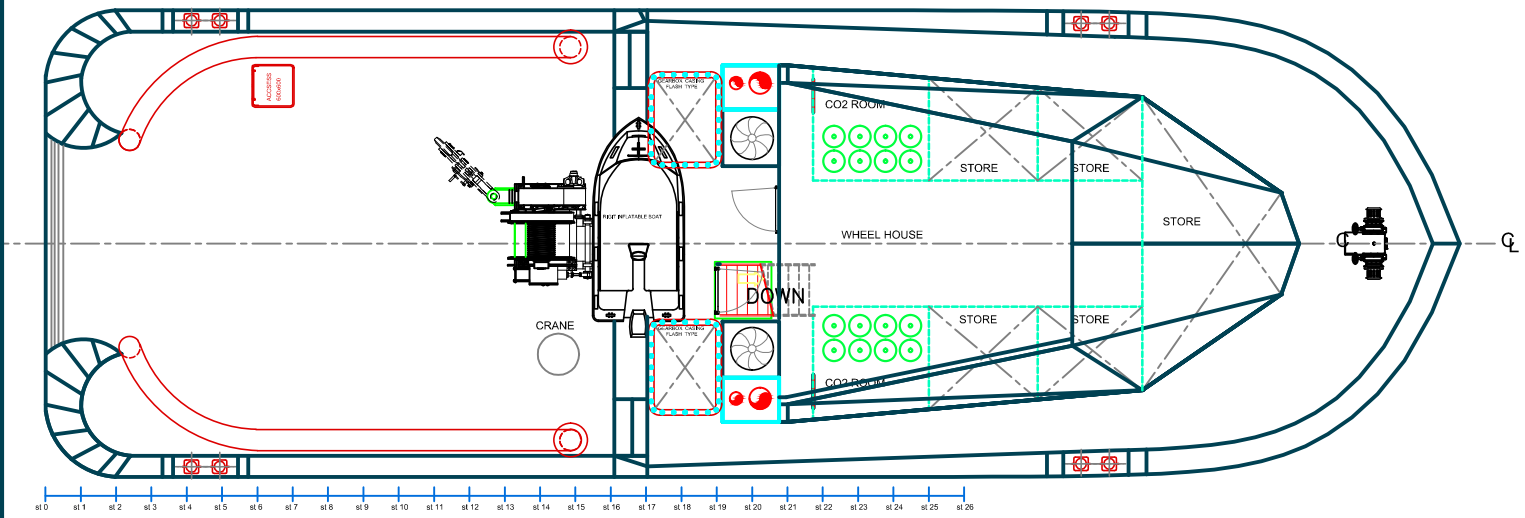


PROFILE SECTION



WHEEL HOUSE ARRANGEMENT

MAIN PARTICULARS	
LENTH OVER ALL	:20m
BEAM MOULDED	:6,6 m
DEPTH (HULL)	:3,36 m
DRAFT	:1,95 m LOADED (DISPLACEMENT 97 TON) m
DRAFT	:1.85 m LIGHTSHIP (DISPLACEMENT 87 TON) m
V	:10 KNOT
NOTATIONS	
+100 A 5 (+) MACHINERY TUG	
SHORT SPESIFICATION:	
TYPE : TWIN SCREW TUG BOAT 14 T BOLLARD PULL	
MAIN ENGINE:2x700 HP@2100 RPM KTA-19 CUMMINS HEAVY DUTY	
GENERATOR: CUMMINS-ONAN 50 kW 1 PIECE 380 V 50 HZ	
CRANE CAPACITY: MAX 1ton at 7m	
WINDLASS: HYROULIC DRIVEN 1.75 T lift capacity	
HYDRAULIC TOWING WINCH CAPACITY:	
Max. Pull	3.5 tons (1st. layer) Speed 15 m/min (1st. layer)
Brake hold 55 tons	
Drum capacity Ø28 mm x 120 m + Ø80 mm x 10 m	
TOWING HOOK CAPACITY: 15 T	
HYDRAULIC POWER PACK CAPACITY:15KW	
MAX WORKING PRESSURE 160 BAR	
PROPULSION: TIGER TYPE PROPELLER & RICE NOZZLE	



ilker Ertuğrul AKKAN
Genel Koordinatör
Gemi İnşa Mühendisi

Sahil Yolu Bulvarı Aydıntepe Mh.
Alize İş Merkezi No: 11 Kat: 1
D: 64 PK 34940 Tuzla/İST.

Tel : +90 216 493 33 03
Fax : +90 216 493 33 03
Mobil: +90 505 389 78 35
Mail : info@iea.gen.tr
Web : www.iea.gen.tr

www.iea.gen.tr

this drawing ,design concept, and specifications are property of ILKER ERTUĞRUL AKKAN AND ARE FURNISHED ON A CONFIDENTIAL BASIS WITH AN EXPRESSED UNDERSTANDING THAT THEY WILL NOT BE COPIED IN A MANNER ,USED FOR MANUFACTURE ,SOLD, TRANSFERED, NOR USED TO THE DETRIMENT OF SAID FIRM WITHOUT WRITTEN PERMISSION . THE RECIPIENT FURTHER AGREES NOT TO DISCLOSE THESE CONTENTS HEREOF ANY OTHER PARTIES EXCEPT FOR THOSE SPECIFIC PURPOSES FOR WHICH THIS DRAWING HAS ISSUED

PROJECT NAME 14 BP 20M TUG BOAT

SHIP NAME	SHIP TYPE
DESIGN ILKER ERTUĞRUL AKKAN	SIGNATURE:
CONTROL ILKER ERTUĞRUL AKKAN	PROJECT NR
CAD ILKER ERTUĞRUL AKKAN	DATE: 31.07.2010
SCALE	CLASS
PAPER SIZE	HULL NO