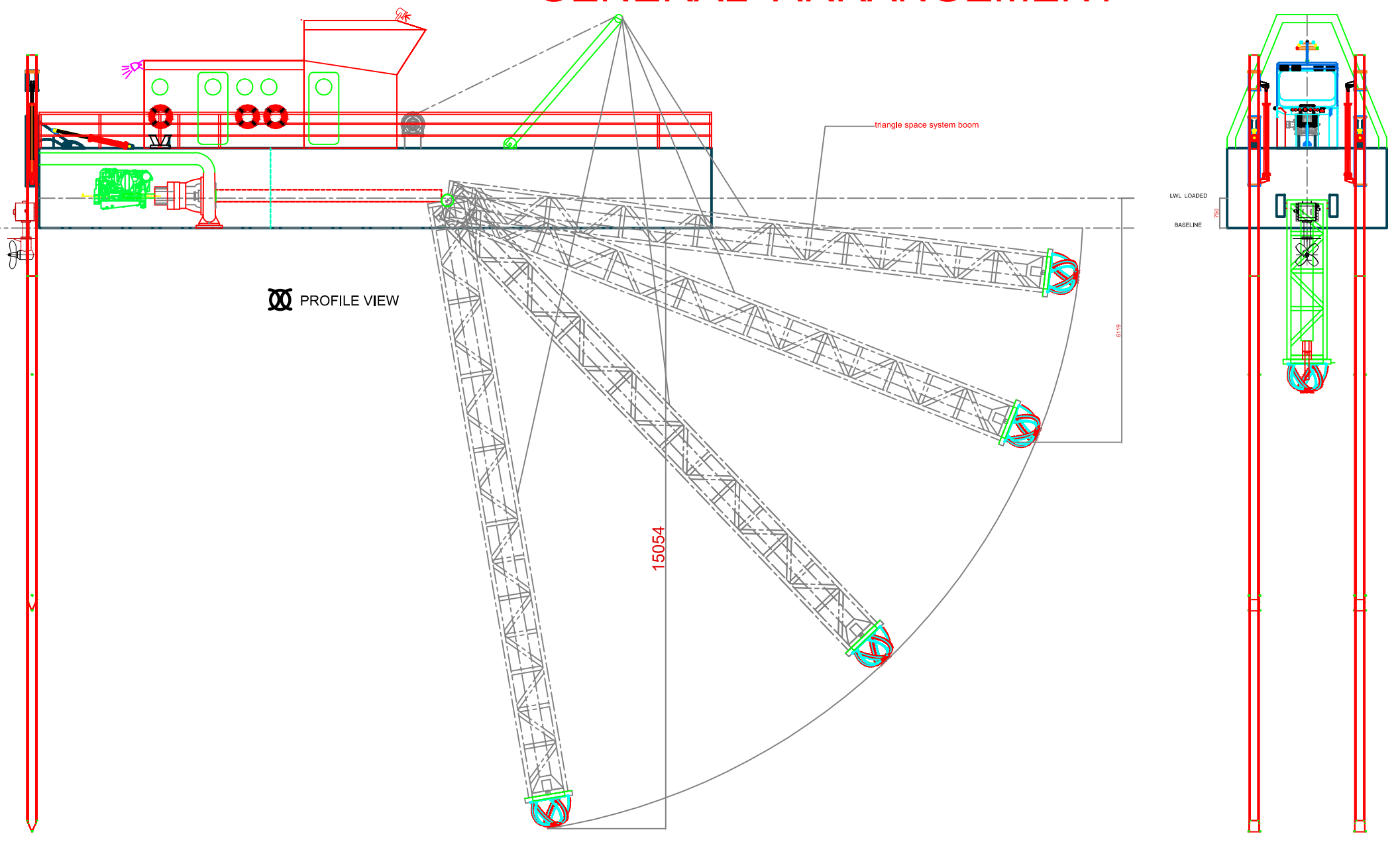


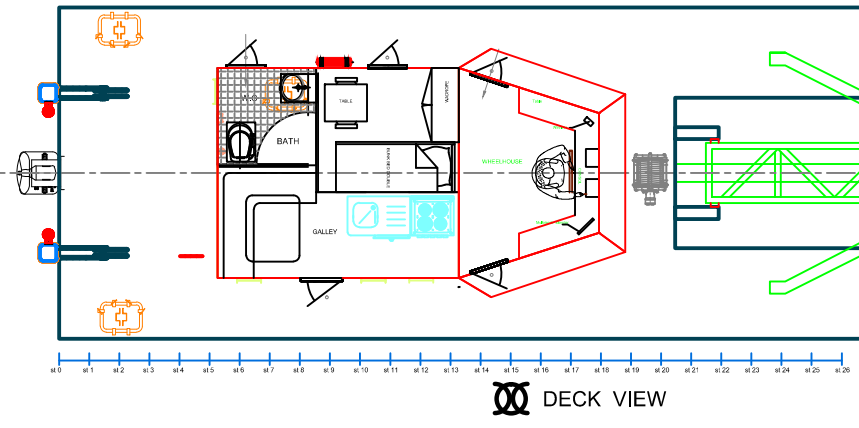
# 12" CUTTER SUCTION DREDGER GENERAL ARRANGEMENT

## PRELIMINARY

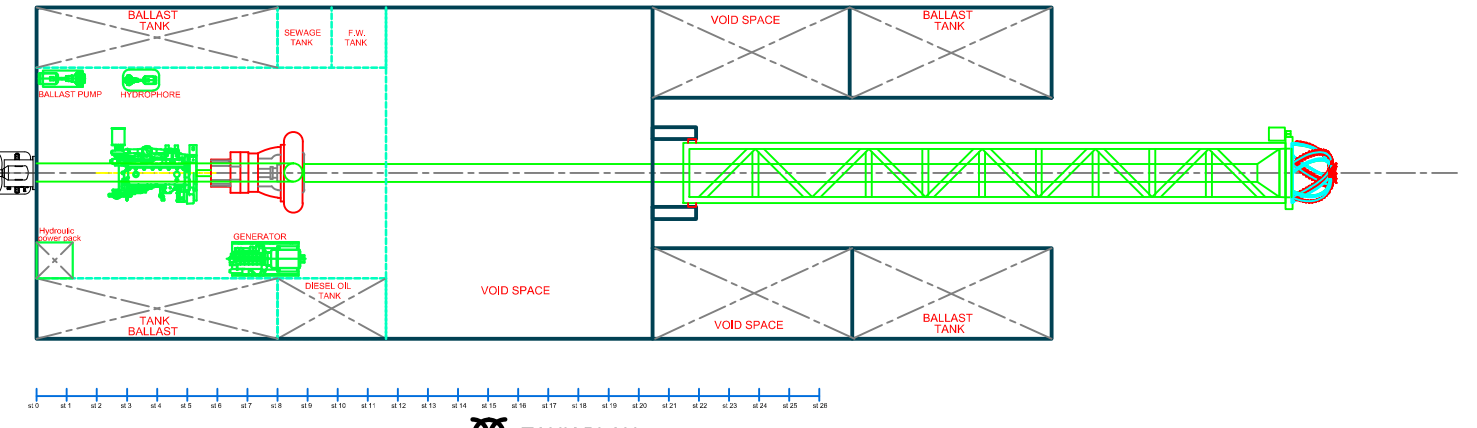


MAIN PARTICULARS	
LENGTH OVER ALL	:11.8 m
LENGTH WATER LINE	:11.8 m
BEAM MOULDED	:4 m
DEPTH (HULL)	:2 m
DRAFT	:0.75 m , DISPLACEMENT 35 TON
V	: 4 - 5 KNOT
SHORT SPECIFICATION:	
TYPE : 300mm DIAMETER CUTTER SUCTION DREDGER	
MAIN ENGINE:500 HP CUMMINS OR EQUIVALENT HEAVY DUTY	
BATTERY: 24 V 200 AH 2 PIECES DRY TYPE HEAVY DUTY	
HYDROULIC WINCH CAPACITY: 15 HP	
CUTTER SUCTION HEAD: 70 HP HYDROULIC DRIVEN	
DIAMETER:1000mm ROTATION: 0 - 40 RPM	
HYDRAULIC POWER PACK CAPACITY: 90 HP	
MAX WORKING PRESSURE 160 BAR	
PROPULSION: HYDROULIC DRIVEN 50 HP HYD. PUMP	
SPUDS : HYDROULIC ACTUATED 14 M LONG	
TANK CAPACITIES	
VOID SPACE VOLUME :16.8 cbm EACH	
BALLAST TANK CAPACITY :6.2 cbm EACH	
DIESEL OIL TANK CAPACITY : 1.7 cbm x 2 ps/stb	
PUMP CAPACITIES	
DREDGER PUMP: 1100 m <sup>3</sup> /h 4 <sup>1</sup> BAR centrifuge pump	
DREDGER PUMP POWER	400 HP
SUCTION DIA.	300 mm

Ø PROFILE VIEW



Ø DECK VIEW



Ø TANK PLAN



İlker Ertuğrul AKKAN  
Genel Koordinatör  
Gemi İnşaat Mühendisi

Sahil Yolu Bulvarı Aydıntepe Mh.  
Alize İş Merkezi No: 11 Kat: 1  
D: 64 PK 34940 Tuzla/İST.

Tel : +90 216 493 33 03  
Fax : +90 216 493 33 03  
Mobil: +90 505 389 79 35  
Mail : info@iea.gen.tr  
Web : www.iea.gen.tr

this drawing ,design concept, and specifications are property of İLKER ERTUĞRUL AKKAN AND ARE FURNISHED ON A CONFIDENTIAL BASIS WITH AN EXPRESSED UNDERSTANDING THAT THEY WILL NOT BE COPIED IN A MANNER ,USED FOR MANUFACTURE ,SOLD, TRANSFERED, NOR USED TO THE DETRIMENT OF SAID FIRM WITHOUT WRITTEN PERMISSION . THE RECIPIENT FURTHER AGREES NOT TO DISCLOSE THESE CONTENTS HEREOF ANY OTHER PARTIES EXCEPT FOR THOSE SPECIFIC PURPOSES FOR WHICH THIS DRAWING HAS ISSUED

PROJECT NAME <b>12" CUTTER SUCTION DREDGER</b>			
SHIP NAME		SHIP TYPE 10" CUTTER SUCTION DREDGER	
DESIGN İLKER ERTUGRUL AKKAN	SIGNATURE:	SCALE	CLASS
CONTROL İLKER ERTUGRUL AKKAN	PROJECT NR	PAPER SIZE	HULL NO
CAD İLKER ERTUGRUL AKKAN	DATE: 31.07.2010		